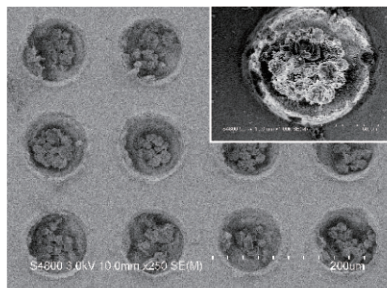


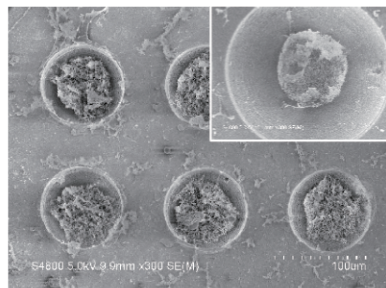
# CERAHIVE™ -3D培養例-

Illustration of Various Cell Types 3D-Cultured by CERAHIVE

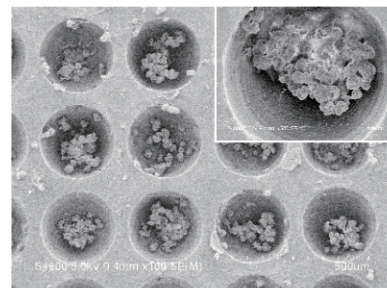
## 均一な細胞塊を形成可能 Uniform Spheroids



ヒト間葉系幹細胞  
Mesenchymal Stem Cells



ヒトES細胞 (KhES1)  
Embryonic Stem Cells

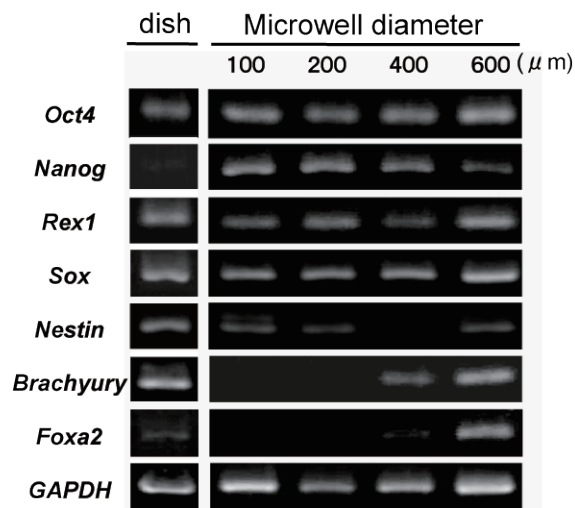


正常ヒト肝細胞  
Hepatocytes

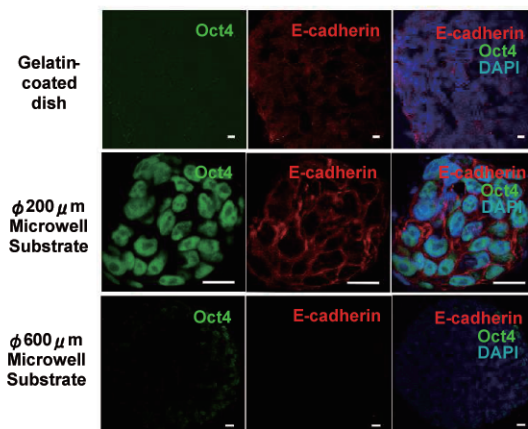
## コロニーサイズによる分化制御 Differentiation Control by Colony Size

### 〈ヒトES細胞の未分化状態〉 Maintenance of Undifferentiated State of Human ES cells

Developed in cooperation with Shinshu University, School of Medicine



Expression of mRNA by RT-PCR analysis

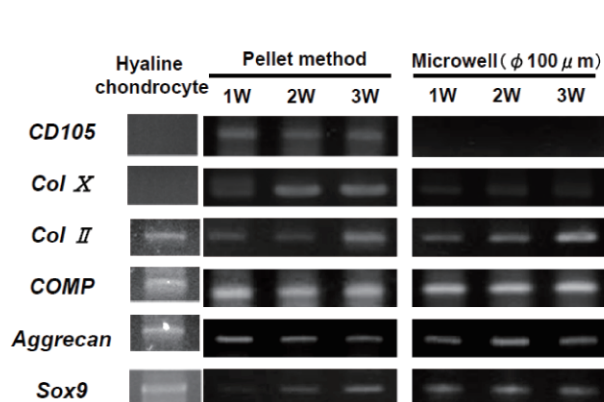


Scale bars: 20 μm

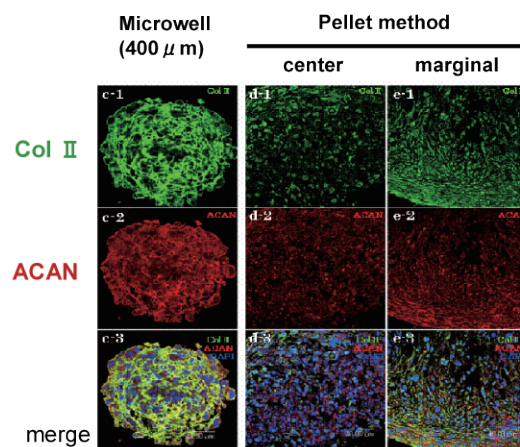
Culture period: 15 days, without feeder cells

Immunostaining fluorescence image

### 〈ヒトMSCの軟骨分化誘導〉 Chondrogenic differentiation of hMSC in the CERAHIVE



Expression of chondrocyte specific gene



Immunostaining fluorescence image